

# One Revolution Dial Indicators Series 2

## Series 2

### Graduation 0,01 / 0,1 mm

This is a one revolution dial indicator. It offers you the following benefits:

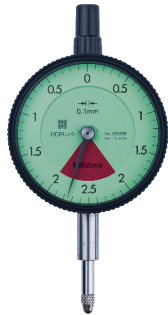
- Bezel clamp and lifting lever (optional) can be attached to either right or left side. They can be easily installed without tools.
- No through screw holes on the frame and secure adhesion between the bezel and the crystal as well as the use of an O-ring prevents water or oil penetration.



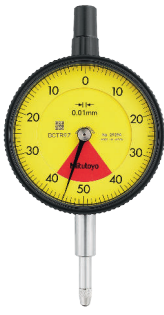
2929A(B)-62



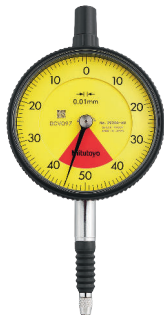
2929A(B)-60



2928A(B)



2929A(B)  
2929A(B)-62



2929A(B)-60



2959A(B)

### Metric

No.	Range [mm]	Plunger Stroke [mm]	Range per rev.	Dial reading	Graduation [mm]	Measuring force
2928A	4	10	5 mm	2-0-2	0,1	0,4-1,4 N
2928AB	4	10	5 mm	2-0-2	0,1	0,4-1,4 N
2929A	0,8	5	1 mm	40-0-40	0,01	0,4-1,4 N
2929AB	0,8	5	1 mm	40-0-40	0,01	0,4-1,4 N
2929A-62	0,8	5	1 mm	40-0-40	0,01	0,4-2 N
2929AB-62	0,8	5	1 mm	40-0-40	0,01	0,4-2 N
2929A-60	0,8	5	1 mm	40-0-40	0,01	0,4-2 N
2929AB-60	0,8	5	1 mm	40-0-40	0,01	0,4-2 N
2959A	1,6	5	2 mm	80-0-80	0,01	0,4-1,4 N
2959AB	1,6	5	2 mm	80-0-80	0,01	0,4-1,4 N

B-type delivered with flat back plate

No.	MPE any 1/10 revolution [μm]	MPE measuring range [μm]	H MPE (Hysteresis) [μm]	R MPE (Repeatability) [μm]
2928A	15	25	12	20
2928AB	15	25	12	20
2929A	5	7	3	3
2929AB	5	7	3	3
2929A-62	5	7	3	3
2929AB-62	5	7	3	3
2929A-60	5	7	3	3
2929AB-60	5	7	3	3
2959A	5	9	4	3
2959AB	5	9	4	3

No.	Mass [g]	A [mm]	B [mm]	C [mm]	D [mm]	E [mm]	F [mm]	G [mm]	I [mm]
2928A	145	47,2	65,2	57	18,1	20	16,9	19,8	7,6
2928AB	136	47,2	65,2	57	18,1	20	16,9	19,8	7,6
2929A	145	47,2	65,2	57	18,1	20	16,9	19,8	7,6
2929AB	136	47,2	65,2	57	18,1	20	16,9	19,8	7,6
2929A-62	145	47,2	65,2	57	18,1	20	16,9	19,8	7,6
2929AB-62	136	47,2	65,2	57	18,1	20	16,9	19,8	7,6
2929A-60	146	47,2	70	57	18,1	20	12,3	29,2	7,6
2929AB-60	137	47,2	70	57	18,1	20	12,3	29,2	7,6
2959A	145	47,2	65,2	57	18,1	20	16,9	19,8	7,6
2959AB	136	47,2	65,2	57	18,1	20	16,9	19,8	7,6

Functions	Series 2			
	2928A up to 2959AB	2929A-60 2929AB-60	2929A-62 2929AB-62	
One revolution	●	●	●	
Shockproof	●	●	●	
IP52			●	
IP64		●	●	

### Optional accessories

No.	Description
21AZB195	Limit Hands (green) 2pcs, Dial Indicator Series 2/3/4
21AZB148	Bezel Clamp for Dial Gauge, Metric, Series 2/3/4
21EZA198	Spindle Lifting Lever, for Digital Indicator, A-Type Dial Indicator Series 2/3/4
21JZA295	Spindle Lifting Cable, for Indicator, L=500 mm
21JZA301	Spindle Lifting Cable with Auto Stop, for Indicator, L=300 mm

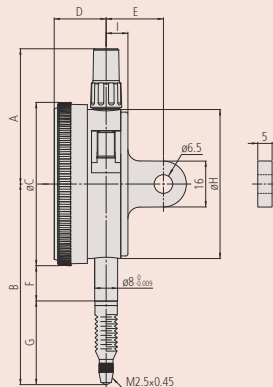
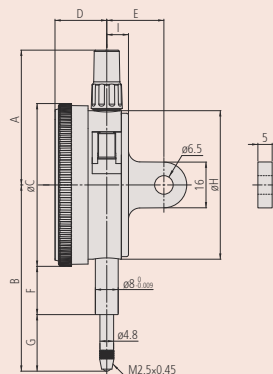
### Consumable spares

No.	Description
901312	Contact Element Ball Point, M2,5x0,45, 7,3 mm Length, Carbide, Metric
21AAB562	NBR Rubber Boot, Digital Gauge ID-B, Dial Gauge IP63/IP64

21AAB562: for 2929A(B)-60 (IP model)

21JZA295 and 21JZA301: not for IP64 type

For accessories and contact points, see end of dial indicators section.



2929A(B)-60