

# EJ Counter and Interfaces for Linear Gauges

The EJ-Counter is targeted at secondary and automatic embedded markets as well as conventional measurement rooms.

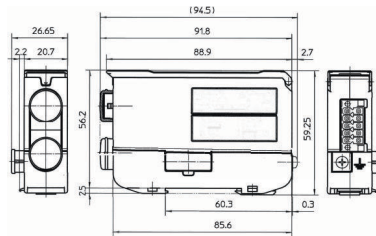
- Multipoint measuring systems with a maximum of 16 gauges can be configured.
- The EJ-Counter is attached to a DIN rail for use. Due to the small size of the unit, it can be installed inside of switchboards /equipment. When using multiple EJ Counters linked together, connection of power to one EJ Counter also supplies power to the other linked counters.
- In addition, through the industrial I/F unit (sold separately), data can be managed on the upper side, and it is possible to support smart factories such as IoT and M2M.
- Easy setup with the LG QuickSetup Tool software (free of charge) (USB interface is required).



EJ-Counter-102N



Counter unit (EJ-102N)  
+ Interface unit (21HZA186)



542-080

## Metric EJ-Counter-102N

No.	Mass [g]	Max. input frequency	Input signal type	Applicable gauge	Gauge inputs	External input / output
542-080	120	5 MHz	differential square wave (RS422A equivalent)	LG100, LG200	2	In: 4 ports / Out: 4 ports Applicable communications standards: Supported by optional interface unit

## Metric/Inch EJ-Counter-102NE

No.	Mass [g]	Max. input frequency	Input signal type	Applicable gauge	Gauge inputs	External input / output
542-081	120	5 MHz	differential square wave (RS422A equivalent)	LG100, LG200	2	In: 4 ports / Out: 4 ports Applicable communications standards: Supported by optional interface unit

### Interface unit CC-Link

No.	Mass [g]	Baud rate	Connector type	Industrial I/F	Data transferred
21HZA186	154	USB 2 Full speed (12Mbps)	Type C	CC-Link Ver. 1.10 CC-Link Ver. 2.00	Current value data* (No unit, signed 32bit data); Tolerance judgment result *only Ver. 2.00 supported

### Interface unit EtherCAT

No.	Mass [g]	Baud rate	Connector type	Industrial I/F	Data transferred
21HZA264	165	USB 2 Full Speed (12Mbps)	Type C	EtherCAT	Current value data (No unit, signed 32 bit data), Tolerance judgment result

### Interface unit Ethernet/IP

No.	Mass [g]	Baud rate	Connector type	Industrial I/F	Data transferred
21HZA188	165	USB 2 Full Speed (12 Mbps)	Type C	EtherNet/IP	Current value data (No unit, signed 32 bit data), Tolerance judgment result

### Interface unit PROFINET

No.	Mass [g]	Baud rate	Connector type	Industrial I/F	Data transferred
21HZA187	165	USB 2 Full Speed (12 Mbps)	Type C	PROFINET RT (RT Class1)	Current value data (No unit, signed 32 bit data), Tolerance judgment result

### Interface unit USB

No.	Mass [g]	Baud rate	Connector type	Industrial I/F	Data transferred
21HZA149	115	USB 2 Full speed (12Mbps)	Type C	None	Current value data (No unit, signed 32 bit data), Tolerance judgment result

## Functions

ZERO SET	●
Origin detection	●
PRESET	●
External HOLD	●
External CLEAR	●
External 1 / 2 SELECT	●
MAX / MIN / difference measurement	●
Internal calculation	●
Tolerance indicator	●
Extern tolerance set (when a PC is used)	●
Tolerance judgement (3 or 5 step)	●
Counting direction switchable	●
External PRESET / ZERO	●

## Specifications

Operating temperature / humidity	0°C to 50°C / 20% to 80% rel. humidity, no condensation
Storage temperature / humidity	-10°C to 60°C / 20% to 80% rel. humidity, no condensation
Power supply	Input voltage: 10 - 27V DC supplied from EJ-Counter Maximum power consumption: Single EJ Counter: 3W or less Maximum consolidation: 30W or less

## Optional accessories

No.	Description
21HZA157	DIN Stoppers
21HZA149	USB I/F unit for EJ Counter
21HZA186	CC-Link / I/F unit for EJ Counter
21HZA187	PROFINET I/F unit for EJ Counter
21HZA188	Ethernet/IP I/F unit for EJ Counter
21HZA264	EtherCAT I/F unit for EJ Counter
21HZA193	Connector Adapter Cable (for P-Gage)
21HZA194	Connector Adapter Cable (for Z-Gage)
21HZA209	DC Jack with Pin Terminal
357651	AC-Adapter 12V, CEE Type, for SJ-210/SJ-310/LH-600/QM-Data 200
02ZAA020	AC-Cordset CEE, 1,8m for EU (excl. UK)
02ZAA030	AC-Cordset BS, 1,8m for UK

# EJ Counter and Interfaces for Linear Gauges



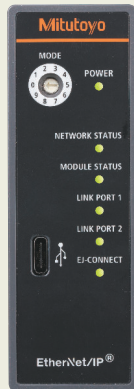
USB (21HZA149)



CC-Link (21HZA186)



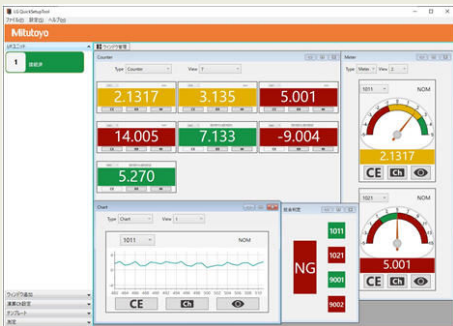
PROFINET (21HZA187)



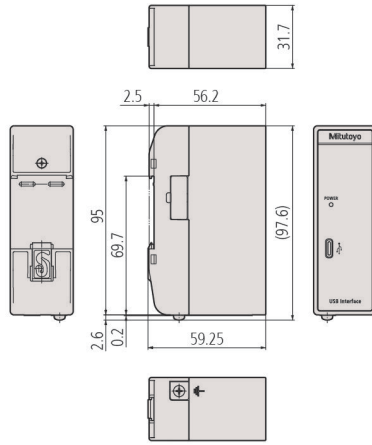
EtherNet/IP (21HZA188)



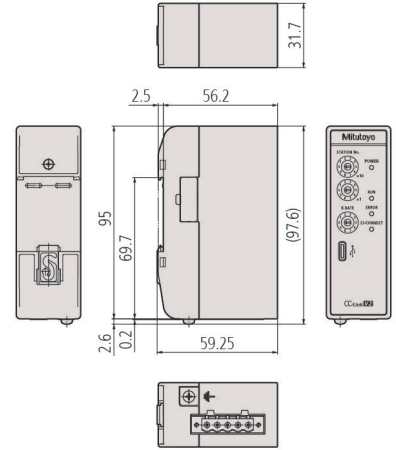
EtherCAT (21HZA264)



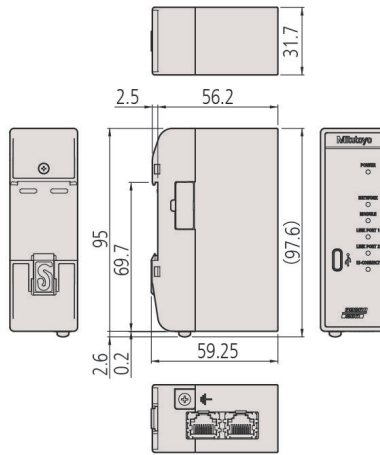
General settings



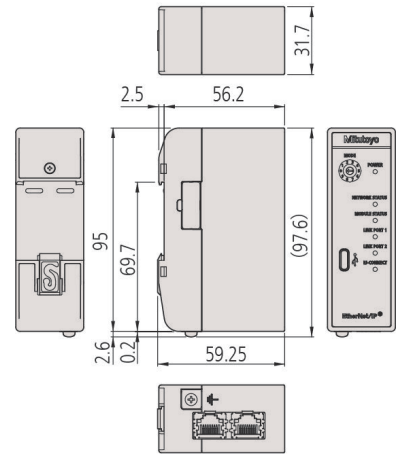
Interface unit USB (21HZA149)



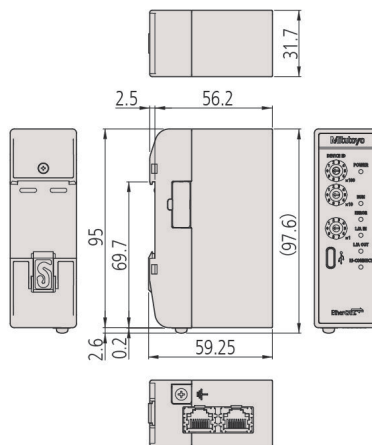
Interface unit CC-Link (21HZA186)



Interface unit PROFINET (21HZA187)



Interface unit EtherNet/IP (21HZA188)



Interface unit EtherCAT (21HZA264)